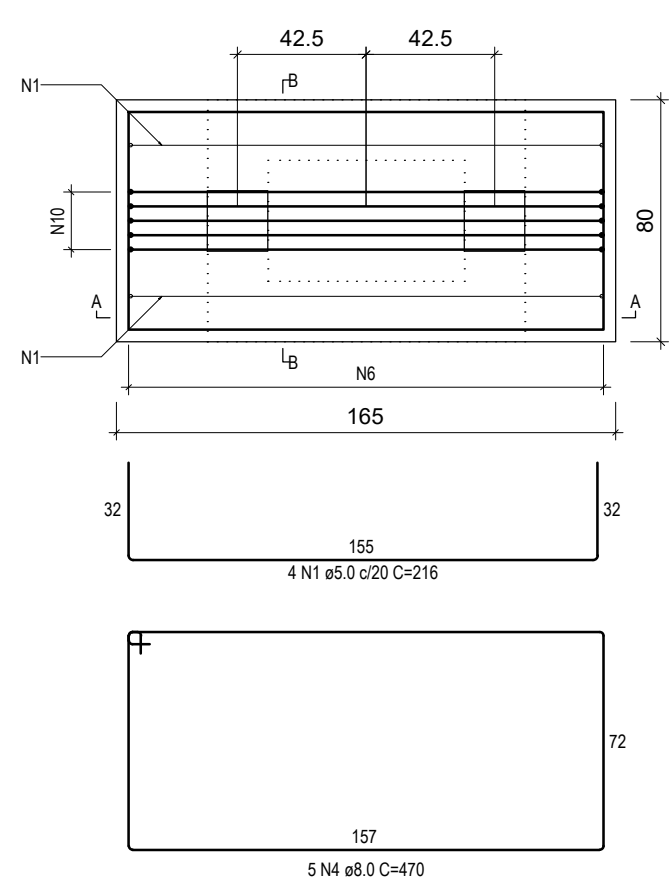
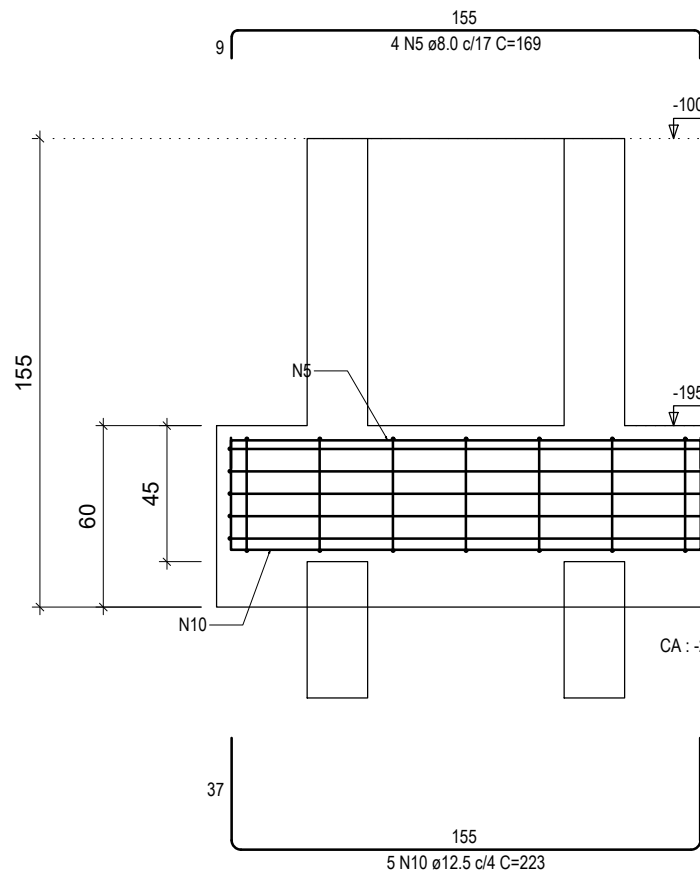


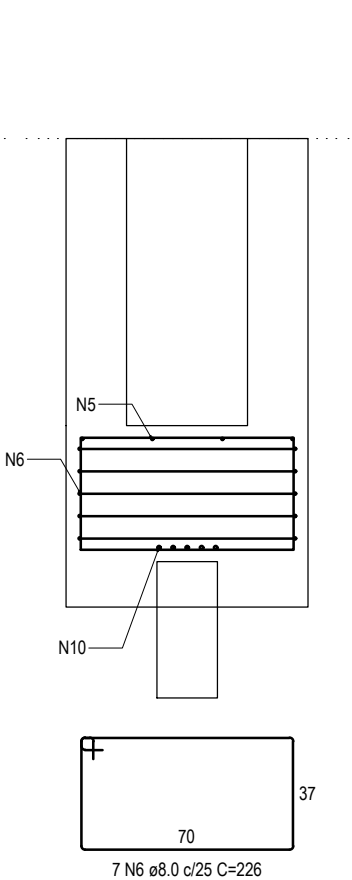
B4 (x4)
2xEST
PLANTA
ESC 1:25



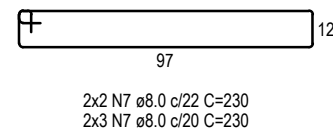
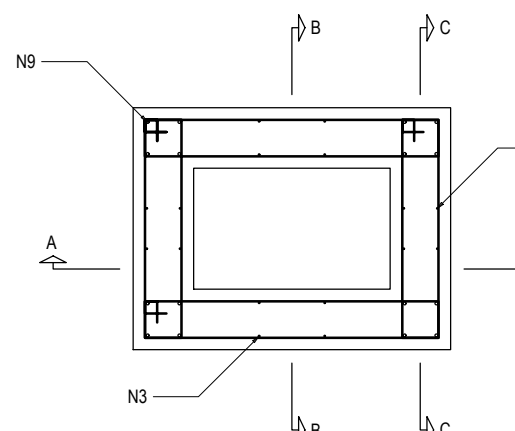
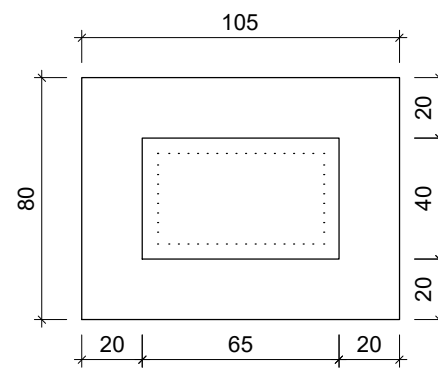
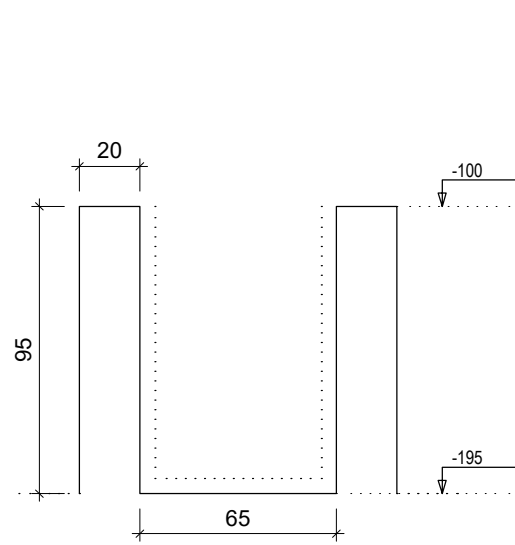
CORTE A-A
ESC 1:25



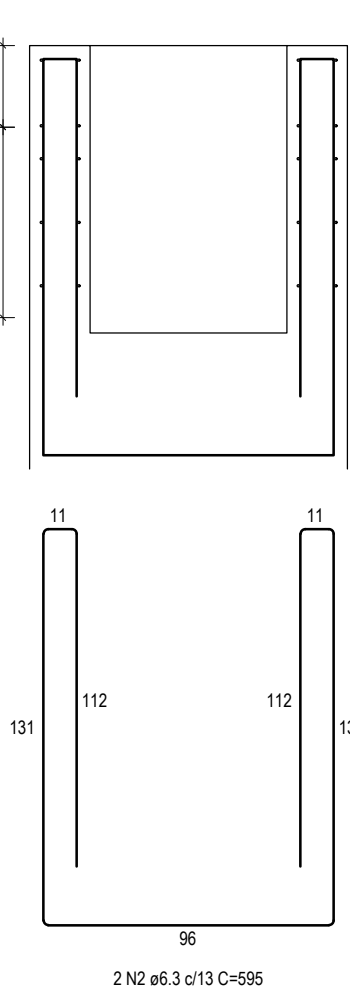
CORTE B-B
ESC 1:25



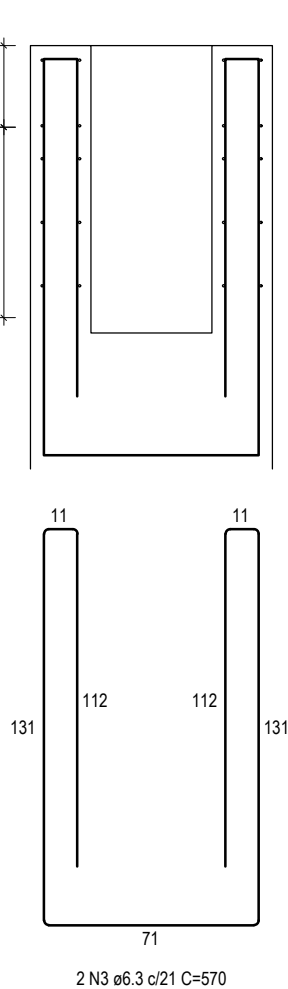
Cálce
P35-P43-P82-P90
ESC 1:25



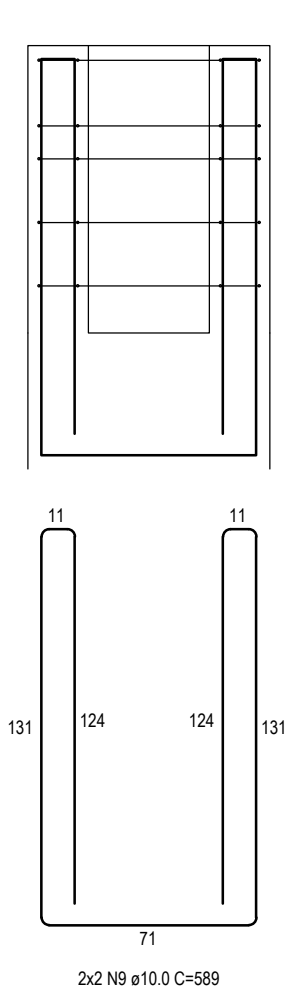
CORTE A-A



CORTE B-B



CORTE C-C



RELAÇÃO DO AÇO

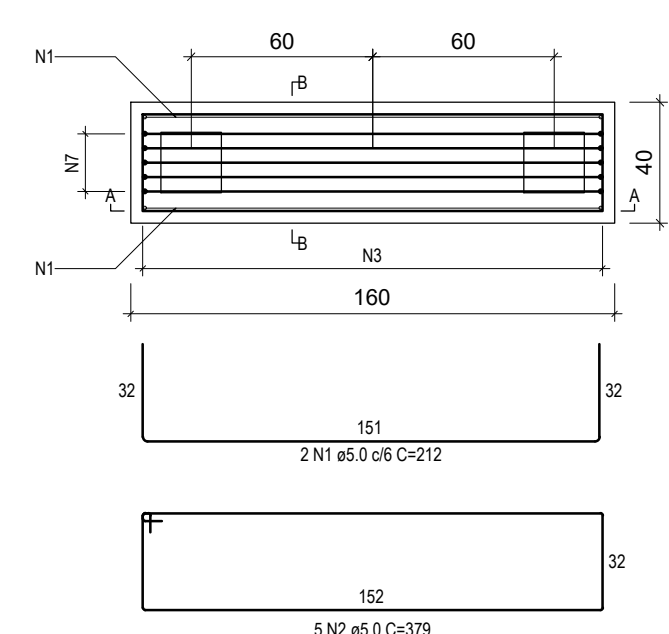
ACO	N	DIAM (mm)	QUANT	C.UNIT (cm)	C.TOTAL (cm)
CA60	1	5.0	16	216	3456
CA50	2	6.3	8	595	4760
	3	6.3	8	570	4560
	4	8.0	20	470	9400
	5	8.0	16	189	2704
	6	8.0	28	226	6328
	7	8.0	40	230	9200
	8	8.0	40	180	7200
	9	10.0	16	589	9424
	10	12.5	20	223	4460

RESUMO DO AÇO

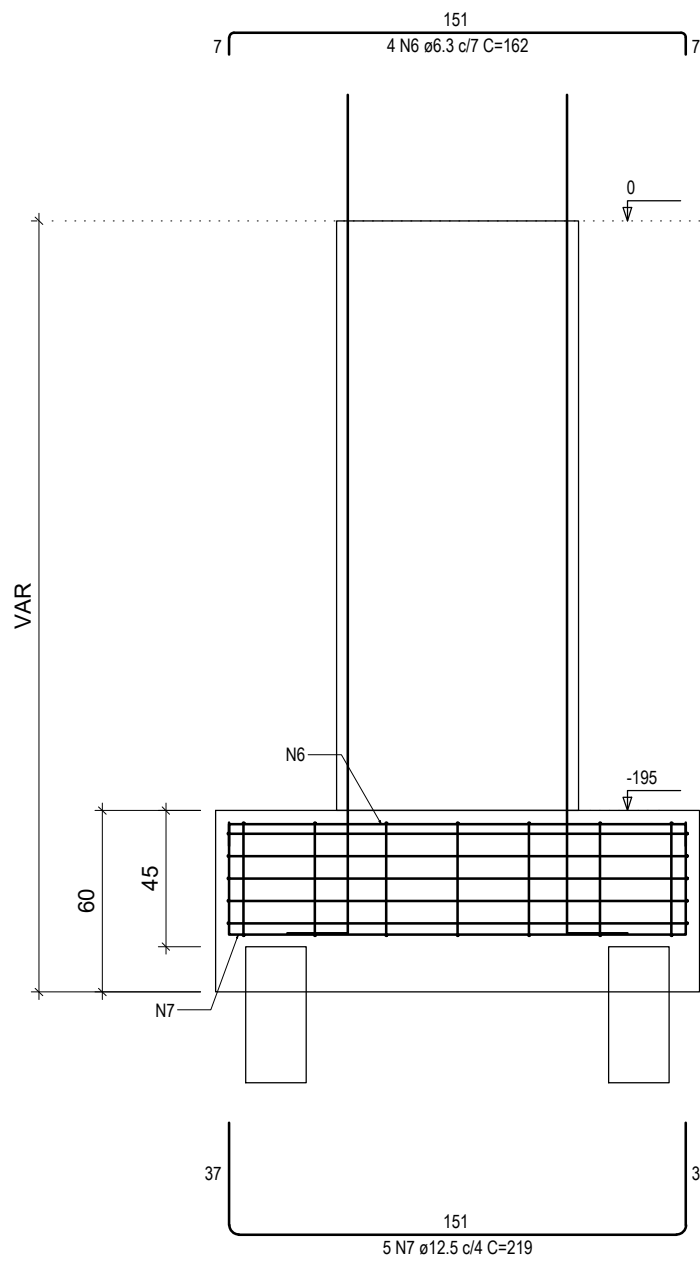
ACO	DIAM (mm)	C.TOTAL (m)	PESO + 10% (kg)
CA50	6.3	93.2	25.1
	8.0	348.3	151.2
	10.0	94.2	63.9
CA60	12.5	44.6	47.3
	5.0	34.6	5.9
PESO TOTAL (kg)			
CA50		287.4	
CA60		5.9	

Volume de concreto (C-30) = 5.32 m³
Área de forma = 36.84 m²

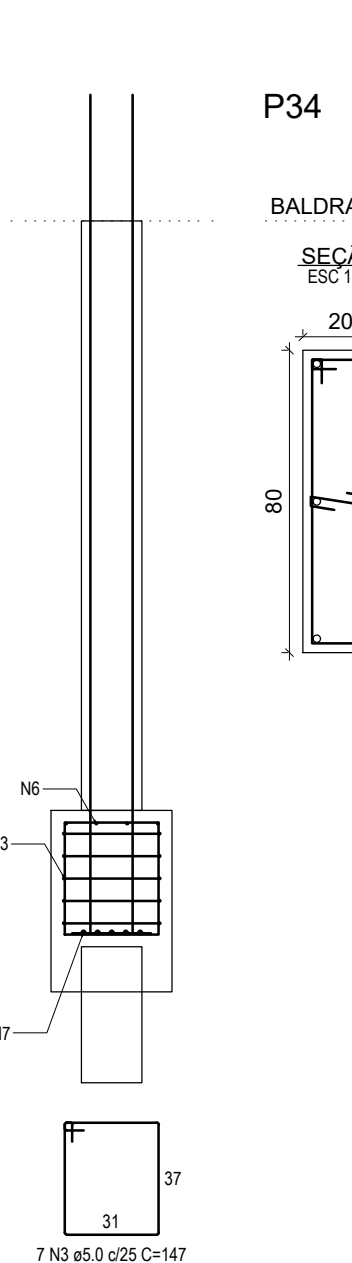
B5
2xEST
PLANTA
ESC 1:25



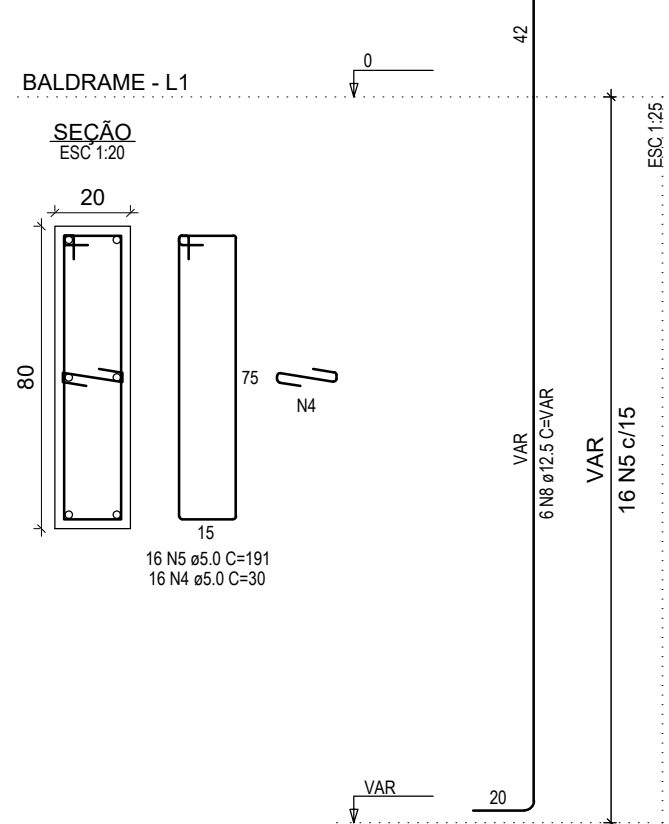
CORTE A-A
ESC 1:25



CORTE B-B
ESC 1:25



P34



RELAÇÃO DO AÇO

ACO	N	DIAM (mm)	QUANT	C.UNIT (cm)	C.TOTAL (cm)
CA60	1	5.0	2	212	424
	2	5.0	5	379	1895
	3	5.0	7	147	1029
	4	5.0	16	30	480
CA50	5	5.0	16	191	3056
	6	6.3	4	162	648
	7	12.5	5	219	1095
	8	12.5	6	VAR	VAR

RESUMO DO AÇO

ACO	DIAM (mm)	C.TOTAL (m)	PESO + 10% (kg)
CA50	6.3	6.5	1.7
CA60	12.5	20.7	30.4
	5.0	68.8	11.7
PESO TOTAL (kg)			
CA50		32.1	
CA60		11.7	

Volume de concreto (C-30) = 0.76 m³
Área de forma = 7.20 m²

PROJETO ESTRUTURAL

Halla | arquitetura

Avenida Sete de Setembro, 50, Comercial C. Berri
Sala 09 | Centro | Timbó | Santa Catarina

☎ 3333 1815 - ☎ 99214 4008
studiohalla3d@gmail.com
www.hallarq.com

CONSTRUÇÃO INSTITUCIONAL EM ALVENARIA - GINÁSIO ESCOLAR
Rodovia Estadual - SC, 416 - São Roque
Timbó - SC

Autor do Projeto: Anderson Halla
Arquiteto e Urbanista - CAU nº 176063-7

Assinatura:

Proprietário: Fundo Municipal de Educação - FMDE de Timbó
CNPJ: 32.257.384/0001-19

Assinatura:

Escala: Indicada
Revisão: 00
Data: Maio 2020

Prancha:

Especificação:
DETALHAMENTO DOS BLOCOS DE COROAMENTO
B4 - B5

E 03